

# CASSETTE® PREFABRICATED BUILDING

---

IMAGING | CRITICAL CARE | CLINICAL UNITS



*Expert in Medical Infrastructures Since 2003*

## CONTENT

- 04** OUR COMPANY
- 06** CASSETTE<sup>®</sup> SOLUTION PRESENTATION
- 10** USES AND FUNCTIONS
- 12** CONFIGURATIONS
- 14** CODES AND SITE PLANNINGS
- 15** BENEFITS
- 16** CASSETTE<sup>®</sup> IN CANADA & ON SITE
- 20** REMOTE COMMUNITIES

People at the heart of all  
our projects

## PRESENTATION OF THE COMPANY

Founded in 2003, SDI Canada is the Canadian leader in the implementation of MRI and biomedical equipment, the design and construction of medical infrastructures and the distribution of specialized accessories.

To support its growth and optimally meet the needs of its customers, SDI Canada has a vast network of partners. This network made up of key players in the construction and healthcare industry enables SDI Canada to carry out large and complex projects.



*PDC is a leader in prefabricated building solutions.*

*SDI Canada is proud to be the exclusive Canadian distributor of PDC's wide range of quality products aimed at the comfort and well-being of users and patients.*

### SPECIALITY

- Radio-frequency shielding installation
- Magnetic shielding installation
- Design and build of medical infrastructures
- Distribution of specialized accessories
- Tailor-made solutions



# CASSETTE®

## PREFABRICATED BUILDING



Whether it is to maintain the operations of a department during its redevelopment, to meet temporary clinical needs on a site or to offer mobile service to various sites, Cassette® prefabricated building solutions meet a wide range of needs in the medical community.

The Cassette® structure is a fully manufactured building. It is designed and engineered to comply with medical equipment installation and operating requirements. The Cassette® complies with Institutional Type II-B and Seismic “D” design and engineering requirements.

This type of construction eliminates building vibrations caused by seismic, high wind conditions and other influences that are known to create imaging artifacts. The Cassette® structure complies with 150 MPH hurricane force wind resistance criteria and heavy snow loads.

Please feel free to contact us at [info@sdicanada.ca](mailto:info@sdicanada.ca) for more information about our system.

### KEY FEATURES

- Machined facilities with superior quality control
- Meet the strictest criteria of medical equipment manufacturers
- Fully customizable to project needs
- On-site assembly possible vertically and horizontally
- Can be attached to existing facilities or operate as a stand-alone building
- Compatible with our patient experience solutions
- Standard dimensions for road transport or by ship



# CASSETTE® SOLUTIONS COMPARISON



## WHEN TO CHOOSE A CASSETTE® SOLUTION

To determine the relevance of deploying a Cassette® solution, several parameters must be considered such as the duration that the installations will be used, the climatic conditions, the type of site where it will be deployed, the speed of deployment required and the level of customization of the installations, in particular. Our team can assist you to establish how to best approach you project.

### Example related to the duration of the project



COMPARATIVE TABLE OF TYPICAL TEMPORARY SOLUTIONS

	TEMPORARY MOBILE SOLUTION	CASSETTE® SOLUTION	TURNKEY PROJECT
<b>Durability</b>	Temporaru	Very durable	Very durable
<b>Price range</b>	\$\$	\$\$	\$\$\$
<b>Dimensions / unit</b>	8 x 40 x 10 ft / unit	16 x 60 x 12 ft / unit	N/A
<b>Delivery method</b>	Air, land and ship	Land and ship	Air, land and ship
<b>Speed of deployment</b>	Fast	Average	Average/Slow
<b>Demobilization</b>	Fast	Average	N/A
<b>Imaging equipment installation</b>	Factory / On site	On site	On site
<b>Combinaison of on-site modules</b>	N/A	Yes	N/A
<b>Site preparation</b>	Average	Average	Complex
<b>On-site installation</b>	Simple	Average	N/A
<b>Possibles uses</b>	MRI, CT, PET/CT, critical care unit, primary care unit, respiratory isolation unit, etc.	MRI, CT, PET/CT, critical care unit, primary care unit, respiratory isolation unit, etc.	MRI, CT, PET/CT, critical care unit, primary care unit, respiratory isolation unit, etc.

# USES AND FUNCTIONS

Cassette® units are designed to adapt to any infrastructure needs. Completely customizable from the inside, these units can accommodate all types of equipment and premises found in traditional buildings.

Resistant to inclement weather and harsh weather conditions, these units can be installed in the most extreme environments. The outer shell of the modular units can be modified in various ways to ensure that they are in harmony with their environment.

## BUILDING OPTIONS

- The Cassette® provides many options and upgrades from the standard features
- Many layouts of the building can be designed to meet the best workflow. MRI, CT, PET/CT, DXR, Mini-Clinics
- Layouts can be mirrored or flipped
- The Cassette® can be a stand alone building or connected to existing Hospital/Clinic
- Bathroom and changing room options
- All Glass RF Door. Privacy Glass RF Glass Door and RF Window
- Building can be extended to 60'
- Our Caring Suite or the Philips Ambient Experience Suite can be added for enhanced patient and staff experience





# CONFIGURATIONS

## DIMENSIONS

- Standard dimensions for easy transport
- Other standard sizes available
- Variable interior configurations
- Details available upon request



## ASSEMBLE YOUR CASSETTE® UNITS TO CREATE YOUR OWN MINI CLINIC



## CUSTOMIZABLE EXTERIOR FINISH

Add any type of exterior finish to the Cassette® :



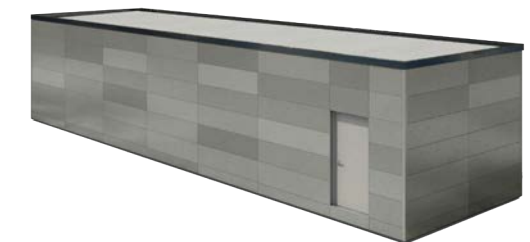
Standard stucco finish



Partial or full brick wall



Curtain wall



Metal siding

Combine the finishes to match your existing facilities



# BUILDING CODES

## COMPLIANT TO CANADIAN CODES

- The Cassette® is built to current Canadian Building codes, that will be stamped and approved by a Canadian Architect
- Cassette® plans are reviewed and approved by customer Architect
- All building inspections will be conducted in PDC WI plant. TR Arnold, a Third Party Engineering Firm, is used for inspection and approval during manufacturing which allows us to ship a fully finished building to the customer's site
- Vendor equipment installation can begin as early as 3 days following building installation



# SITE PLANNING

## EASY STEP-BY-STEP PLANNING

- Account's architect will be provided with a Foundation Planning & Building Installation Document
- This document provides accurate Cassette® site planning information
- Cassette® foundation and utility installation costs are essentially the same for a "site built" or any other manufactured building or "modular" alternative
- The architect will prepare, stamp, and submit the site work plans, combined along with PDC "stamped" Cassette® plans, to all agencies for their review and approval
- All site work will be performed by the customer's selected local contractors
- A general site planning guide can be provided



# BENEFITS

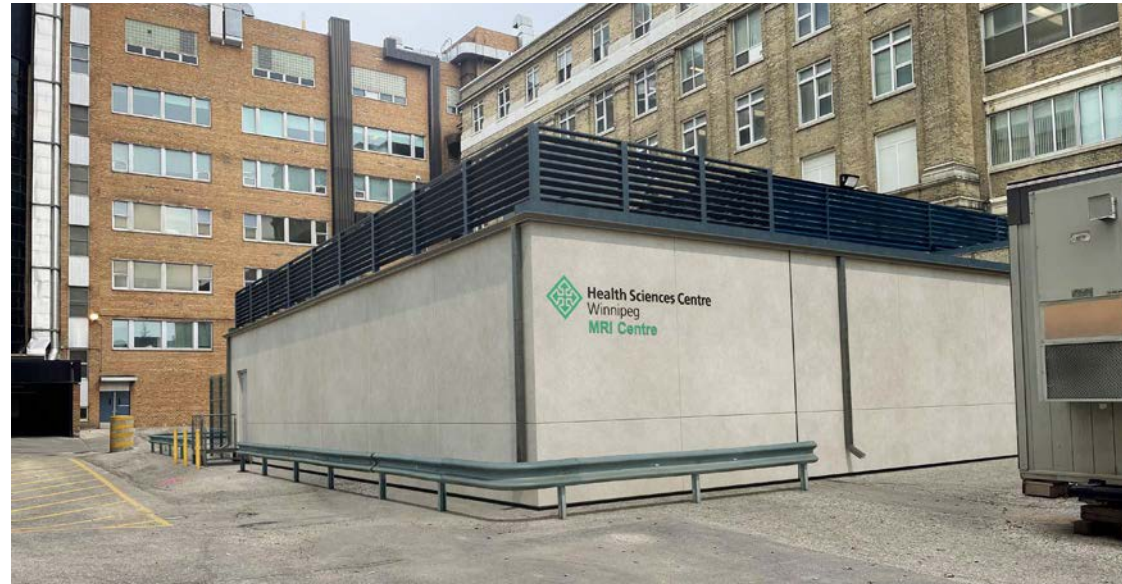
## KEY BENEFITS OF CASSETTE®

- Certified Building Structure to meet Vendors Pre-Install Requirements
- Enhanced Institutional Type II-B
- Fully Welded, unitized frame with 16GA Steel
- Prefabricated & Relocatable Building
- Tested at the US Military White Sands, NM, Testing Grounds
- Engineered to meet up to 150 MPH Winds
- Speed – Delivery in 15 Weeks (From time construction begins)
- Simplicity – Limited site work & installation requirements
- Cost Containment – Very predictable project costs
  - No Change Orders
  - No Project Delays
- Superior IQ – Building vibration & harmonics at absolute minimum
- Long-term Investment – 50 Year Life Expectancy & Moveable
- Completely Finished Interiors & Exterior
- Vendor Equipment Room Fully Installed prior to shipment
- Compliance with all building codes
- Design Flexibility
- No in hospital construction work arounds





# CASSETTE® IN CANADA



Health Sciences Center - Winnipeg, Manitoba



Charles River Laboratories - Laval, Québec

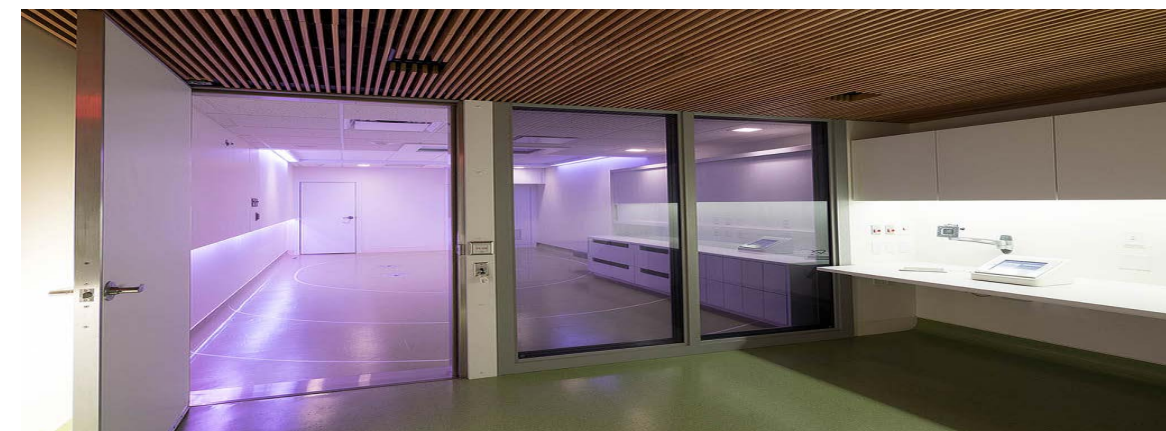
# CASSETTE® ON SITE



Patient experience lighting



Ergonomic design



Customizable finishes



# CASSETTE® ON SITE



Video demonstrating the installation of a unit : <https://vimeo.com/user26748437/review/196311207/5a074cc044>



Road delivery



Crane installation



Installation on a slab adjacent to existing buildings



# RELOCATABLE BUILDING



## SUPPORT FOR REMOTE COMMUNITIES

Cassette® are designed to be relocatable buildings. These units are ideal for satellite healthcare in remote communities.

Resistant to harsh weather conditions, these units can be installed in the most extreme environments.

# CONTACT



## SDI CANADA

-  7497, Transcanada Highway  
Saint-Laurent, QC H4T 1T3
-  +1.514.225.1780
-  +1.514.635.1377
-  [info@sdicanada.ca](mailto:info@sdicanada.ca)
-  [www.sdicanada.ca](http://www.sdicanada.ca)







SDI™  
CANADA